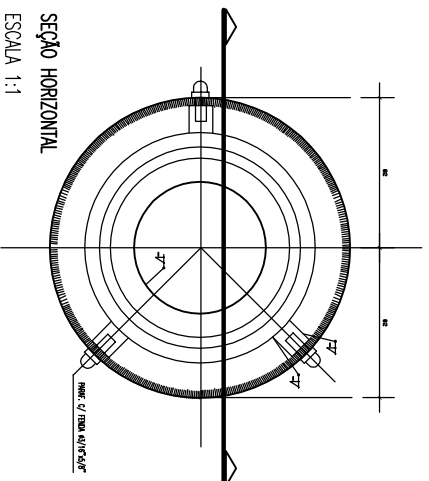
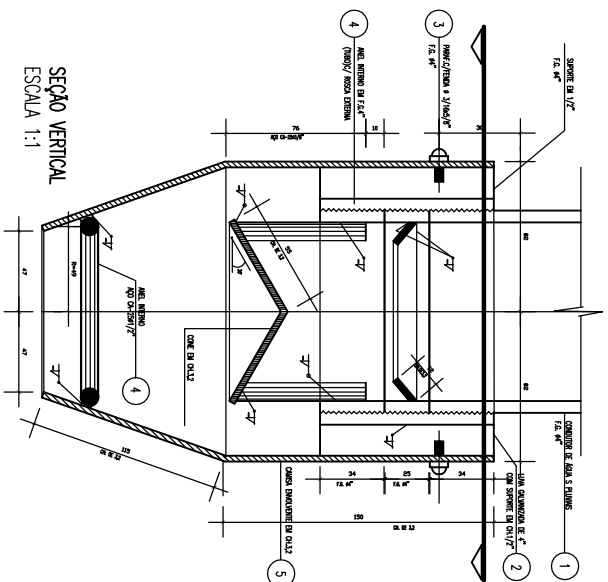
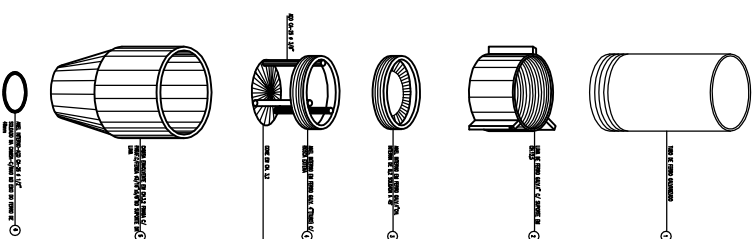


PONTEIRA DOS CONDUTORES DE ÁGUAS PLUVIAIS DOS BLOCOS DE DOIS PAVIMENTOS



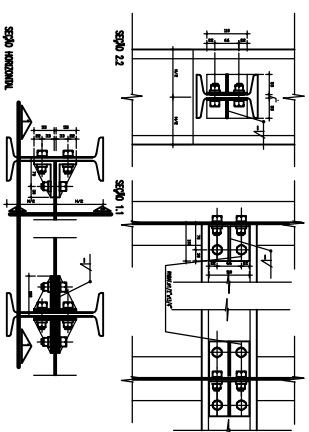
ESQUEMA DE MONTAGEM
SEM ESCALA



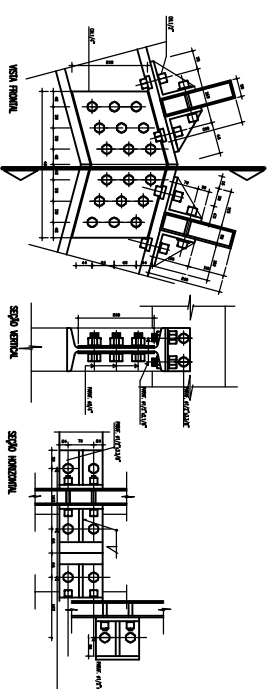
NOTAS:

- 1- TUBO EM PVC 100x125
- 2- FLANGE EM AÇO 100x125
- 3- VEDANTE EM PVC 100x125
- 4- PORCA EM AÇO 100x125
- 5- ARRUELA EM AÇO 100x125

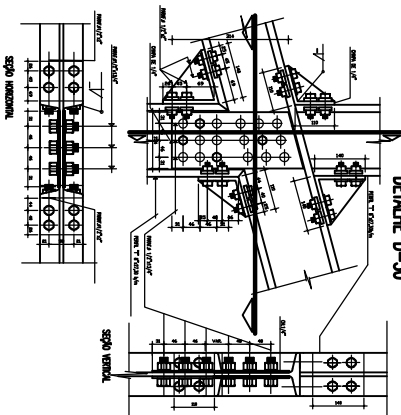
DETALHE D-31



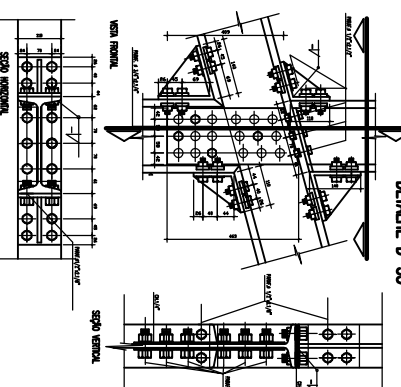
DETALHE D-34



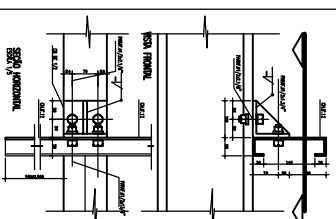
DETALHE D-30



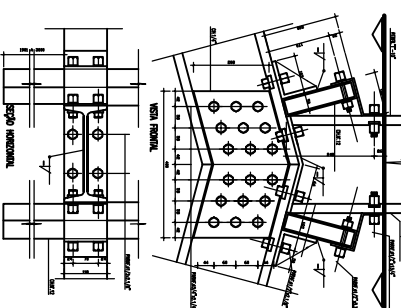
DETALHE D-35



DETALHE D-29



DETALHE D-32



DETALHE D-33

